

# # GUBBACHI LEARNING COMMUNITY # LEARNING TO FLY

ANNUAL REPORT 2023/24



# CONTENTS

---

About Gubbachi	2
Our context	3
<b>Our programs</b>	4
Education programs	5
Community programs	13
<b>Highlights of the year</b>	18
Campaigns & fundraisers	19
Corporate volunteering	20
In the media	22
<b>Financials &amp; stakeholders</b>	23
Funding & donations	24
Allocation of funds	25
Balance sheet	26
Income & expenditure	27

## STAKEHOLDER SPEAK

### SUJATHA K.A.

Headmistress, GHPS Harlur



“It has been two years since Gubbachi began work in our school. The teachers have developed a seamless relationship with our students, coming in at 9 and engaging with them till 5. Among other things, there is a focus on teaching English. This is very important because many parents these days hesitate to send their children to government schools. It is heartening to see little children from *Nali-Kali* speaking English.”

# LOVE, GUBBACHI

In 2023-24, we continued our work taking on challenges faced by migrant communities in the big city.

Through *Gubbachi Enable*, our Janadhikara interventions enabled access to healthcare and welfare benefits, making families more secure. Our Health Initiative in Kariyammana Agrahara, for instance, ensured home births were reduced to zero.

Our Education programs also continued to impact lives. *Gubbachi Transform* (Grades 1-3) added a ninth school with GHPS Panathur, amping up our presence to 27 *Nali-Kali* sections, and strengthening our partnership with the Department of Education (DoE).

At GHPS Kodathi, our programs ran at full capacity. From pre-schooling through *Gubbachi Buds* (3-6 year olds), bridging learning gaps through *Gubbachi Connect*, and training teachers for Grades 4-7 through the *School Learning Program*; multiple routes to achieve quality education at government schools and enable school completion.

In 2021-22, the Connect and Buds programs were implemented at our new Community Learning Centre (CLC) in response to the 170 out-of-school migrant children in the Bellandur area. The CLC model presents the biggest challenge going forward. The DoE has acknowledged our work. This year will be critical to our advocacy and collaboration efforts with government schools in creating spaces within the public education system for children with diverse backstories.

As always, your support has made our progress possible. We present our work with gratitude.

With love,

Team Gubbachi



L to R: Rizwan, Preethy, Deyone, Mani, Nomita, & Somya



# ABOUT GUBBACHI

## Empowering one child, one family, one community at a time.

Founded in 2015, Gubbachi is a **Section 8 company\*** working towards the educational inclusion of marginalised children - typically from migrant families, as well as community interventions connecting migrant families to benefits and entitlements.

### Our vision

A world where every child develops their potential to lead a dignified life.

### Our mission

To empower marginalised children and underserved families in urban areas by providing access to quality education, primary healthcare, and vital documentation; bridging the gap to economic stability, social equality, and a life of dignity and opportunity.

### Our values

- We engage with **care and concern** in all our relationships, with each stakeholder and the environment.
- We work with complete **authenticity** in everything we do.
- We believe that every child, adult and organisation can **learn to learn**.
- We believe that **knowledge sharing** is fundamental to systemic and cultural shifts.

### \*What is a Section 8 company?

The Companies Act, 2013 defines Section 8 companies as those with charitable and non-profit objectives, including education. All income and profits for such entities are put towards furthering their chosen cause, with no dividends being paid to any of their members.





## THE PROBLEM

**Distress migrant families who live in the city have little support and security:**

- No quality schooling options – leading to children being out of school, or not learning while at school.
- Dire living conditions in dense settlements.
- Healthcare at stake – lack of information or cultural barriers may hamper access to treatments.
- Lack of last mile connectivity to social benefits and identity documents - vital for accessing services.

## THE SOLUTION

- Portfolio of quality education programs that are relevant to different groups.
- Free Primary Health Centres with Health Associates in migrant communities.
- Health awareness on critical topics such as woman and child health and nutrition.
- Support in securing identity documents.
- Last mile support in accessing social benefits.



## SUPPORTER SPEAK

### ARATI KSHIRSAGAR

Individual donor



“All Gubbachi’s programs are devised and geared for maximum impact, for the good of the children as well as their families. They work with the government and government institutions to ensure systemic change. They understand the challenges faced and strive to help overcome them.”



# OUR PROGRAMS

## EDUCATION PROGRAMS

Connect	6
Buds	8
Transform	9
School Learning Program	10

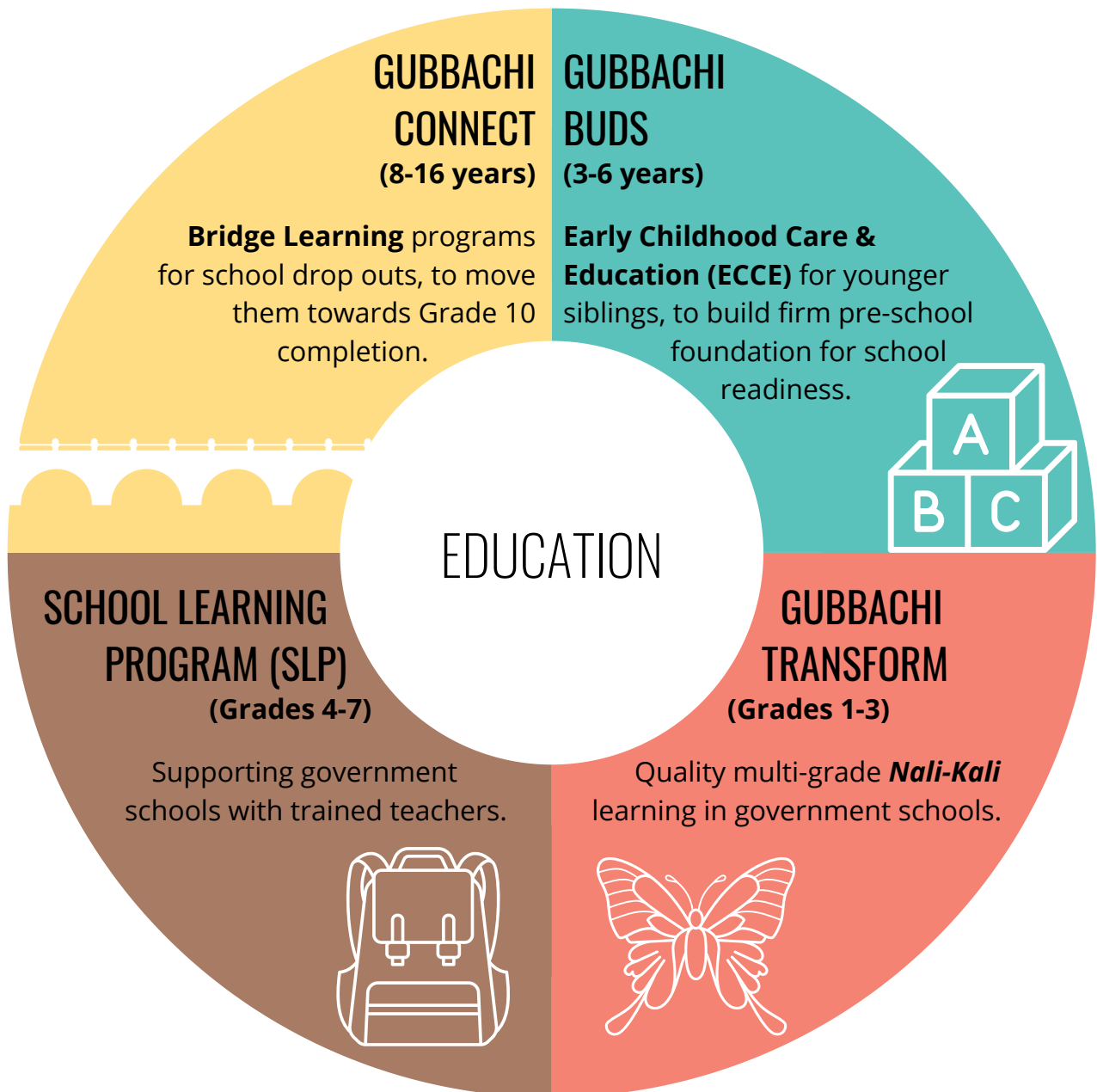
## COMMUNITY PROGRAMS (ENABLE)

School Support Initiative	14
Health Initiative	14
Janadhikara	14





# EDUCATION PROGRAMS



Our education programs - located both in and out of government schools - are designed to support the learning needs of marginalised children who find it difficult to access or remain in school.

## PAN-PROGRAM DONORS

Child Welfare Charitable Trust • Farm India Impex • GainInsights Solutions • General Datatech India • LG Soft India • Mountain Managers • Rare Family Foundation • Rotary Bangalore Koramangala Charitable Trust • Vastra Concepts • XL India Business Services

## INFRASTRUCTURE SUPPORT IN GOVERNMENT SCHOOLS

Azuga Telematics • Brainlabsdigital India • Marlabs Innovations • Mountain Managers

# CONNECT

## NUMBERS AT A GLANCE

### GHPS Kodathi

- 144 enrolments
- 10 trained teachers
- 6 volunteer teachers

### Kariyammana Agrahara

- 160 enrolments
- 9 trained teachers
- 3 volunteer teachers
- 1 coordinator

**Bridge Learning** programs for school drop outs (8-16 years), to move them towards Grade 10 completion.

## PROGRAM HIGHLIGHTS, 2023-24

### GHPS Kodathi

- 23 students (14+ years) are preparing for their Grade 10 exams.
- 24 students (10-14 years) progressed from foundational learning towards their grade levels.
- The Indian Music Experience conducted drum jam and vocal music sessions during the summer camps.
- Students went on exposure visits to Wipro and LTIMindtree campuses.
- Organised by Wipro, our students interacted with Dr Shamrao and Aditya R - scientists from U R Rao Satellite Centre of ISRO and Mission Chandrayaan.
- Students went on a three day field trip to Channapatna, Ranganathittu Bird Sanctuary and Melkote Wildlife Sanctuary.

### Kariyammana Agrahara

- 30 children (9-12 years) passed their Grade 3 and 5 Open Basic Education (OBE) exams successfully.
- The dedicated football program continued at the Kicks on Grass Academy. Friendly matches played against Grassroots Football Club, Shlok International School and Indus International School.



# CONNECT

- Students enjoyed visits to the Rambo Circus and Bannerghatta National Park.
- Students visited the Neev Literature Festival and the Museum of Art and Photography (MAP).
- Teachers attended read-aloud workshops conducted by Thejaswi Shivanand and theatre and movement workshops conducted by Geeta Prabhu and Murtuza.

## Pan location

- 30 teenagers from both Kodathi and Kariyammana Agrahara Bridge programs attended a six day residential Oasis Leadership Camp where they were introduced to the ideas of positive socialising and greater autonomy over their lives.
- Regular environmental awareness sessions were conducted by Chetana and John of Spiders and the Sea, exposing our children to ways of interacting with nature around us.
- 48 children and 6 teachers from both centres trained for weeks and ran the Spirit of Wipro 5K Run.

## PROGRAM FUNDERS

- Epicor Software India
- LTIMindtree Foundation
- Moder Solution India
- Quicken Software Development
- Rossari Biotech
- UST Global Welfare Foundation
- Wipro Cares

## COLLABORATOR SPEAK

### CHETANA PURUSHOTHAM & SAMUEL JOHN

Spiders and the Sea

“The children at Gubbachi are intelligent, curious and kind. They have been remarkable in their assimilation of new information, critical thinking and enthusiastic questioning. Their limitless curiosity has taken our nature-themed classes everywhere from the tree outside their classroom to the heart of dying stars.”





# BUDS

## NUMBERS AT A GLANCE

### GHPS Kodathi

- **102** enrolments
- **41** siblings supported
- **2** trained teachers
- **24** children mainstreamed to Grade 1

### Kariyammana Agrahara

- **102** enrolments
- **20** siblings supported
- **2** trained teachers
- **1** assistant teacher
- **22** children mainstreamed to Grade 1

**Early Childhood Care & Education (ECCE)** for younger siblings, to build firm pre-school foundation for school readiness.

## PROGRAM HIGHLIGHTS, 2023-24

- Nature walks conducted around the centres to explore the natural world.
- Field trips to Swabhiman Park, Cubbon Park and The Martin Farm, where the children were overjoyed to interact with farm animals.
- ECCE Curriculum Specialist and Teacher Trainer Geeta Prabhu continued to build capacity through periodic teacher workshops in foundational literacy and numeracy.
- Buds Coordinator Geetha S. conducted regular meetings with the ECCE team to discuss curriculum and methods.
- Teachers attended ongoing capacity building workshops on POSH, POCSO and mindfulness.

## COLLABORATOR SPEAK

### GEETA PRABHU

ECCE Curriculum Specialist & Teacher Trainer



In my seven years of association with Gubbachi, one word that comes to mind is 'unputdownable'. The founders with faith in their convictions, always look for new possibilities, despite the ups and downs. Gubbachi invests not only in academics but also nurturing the wellbeing of the community the children come from - working with their families, providing the much needed help for childcare/ healthcare to encourage children to attend school."

## PROGRAM FUNDERS

- LTIMindtree Foundation



# TRANSFORM

Quality mixed grade **Nali-Kali** learning in government schools (Grades 1-3).

## PROGRAM HIGHLIGHTS, 2023-24

- GHPS Panathur became a partner school this year, marking our foray into the Varthur cluster.
- Remedial classes continued during the summer break, giving children the extra support they need.
- Enrichment sessions continued in sports and dance; children performed for cultural events at schools.
- Field trips to Bal Bhavan (Cubbon Park), Bannerghatta National Park and Swabhiman Park.
- Continuous onsite teacher training in English conducted by in-house trainer Kamini Ravichandran.
- Uma Hrishikesh of Maja Maadi guided teachers with daily routines in the classroom that improve auditory and visual memory, mental math and listening comprehension.
- Capacity building workshops on POSH, POCSO, mindfulness, team building and leadership were held throughout the year.
- Our teachers shared their knowledge with others in the cluster in the bi-monthly *Samalochana Sabhe* organised by the DoE.
- Teacher Radha K R from GMPS Chennagiri was honoured at the Marichi Educators Awards organised by Indirapuram Education Network.

## NUMBERS AT A GLANCE

- **786** children enrolled
- **9** partner government schools
- **27** trained teachers
- **3** trainee teachers
- **2** coordinators

## PROGRAM FUNDERS

- Child Welfare Charitable Trust
- iQuanti India
- Lam Research India
- LTIMindtree Foundation
- ThoughtFocus Information Technologies
- United Way of Bengaluru



# SCHOOL LEARNING PROGRAM

## NUMBERS AT A GLANCE

- **93** children enrolled
- **1** school engaged
- **7** trained teachers
- **1** coordinator

Supporting government schools with trained teachers for Grades 4-7.

## PROGRAM HIGHLIGHTS, 2023-24

- Two new classrooms were inaugurated at GHPS Kodathi.
- The girls' volleyball team emerged on top at cluster level, and six other athletes progressed to the taluk level sports competition.
- Our students won prizes in fancy dress, devotional singing, elocution, group song, pick & speak, Bharatanatyam and Bhagavad Gita recitation at *Pratibha Karanji* (inter government school competitions).
- Students participated in the Brillio Robotics Challenge.
- Celebrated Independence Day, English Day, International Day of Democracy, Poshan Abhiyan, Kannada Rajyotsava, Republic Day, Science Day and Annual Day.
- Children were taken on field trips to Shivanahalli, Nandigrama, Curiouscity Discovery Centre and Nehru Planetarium.

## STAKEHOLDER SPEAK

### D.R. RAMAMURTHY

Block Education Officer, East Taluk



"Since Gubbachi adopted GHPS Kodathi, they have been running bridge courses for out-of-school children in the area. Thanks to their efforts, school enrolment is over 300. Gubbachi also gets credit for running *Nali-Kali* classes in 8 schools, where children have picked up impeccable reading, writing and foundational Math skills."

## PROGRAM FUNDERS

- LTIMindtree Foundation



# A SECOND CHANCE



## **Zeenat (16), Bridge Program, Kodathi GHPS Working towards NIOS Class 10 certification**

Zeenat was one of the first 25 children in our inaugural Gubbachi Connect program at Kodathi back in 2015. She was thriving in Class 6 when the pandemic took the family back to their village in Raichur, North Karnataka.

Post pandemic, Zeenat's family returned to the city with much of their lives in crisis. Zeenat had continued studying in her village school but her father Rameez, a daily wage earner, had had his leg amputated. The family were reeling under huge debts to pay his medical expenses. Zeenat's mother Hinabai was now the sole breadwinner.

It became less and less feasible for Zeenat and her elder sister to continue with their education. Her sister got engaged, while Zeenat joined her mother to earn a supplementary income as a domestic help.

We spent hours with the family, talking them through the opportunities available through education. We secured a scholarship for Zeenat to augment the family's income, and put her on a fast track curriculum towards NIOS Class 10 certification.

Zeenat is working hard towards a brighter future.

# STRIDING FORWARD



## **Mina (11), Buds, Transform & School Learning Program, GHPS Kodathi From Gubbachi Buds to a CBSE classroom at The Samhita Academy**

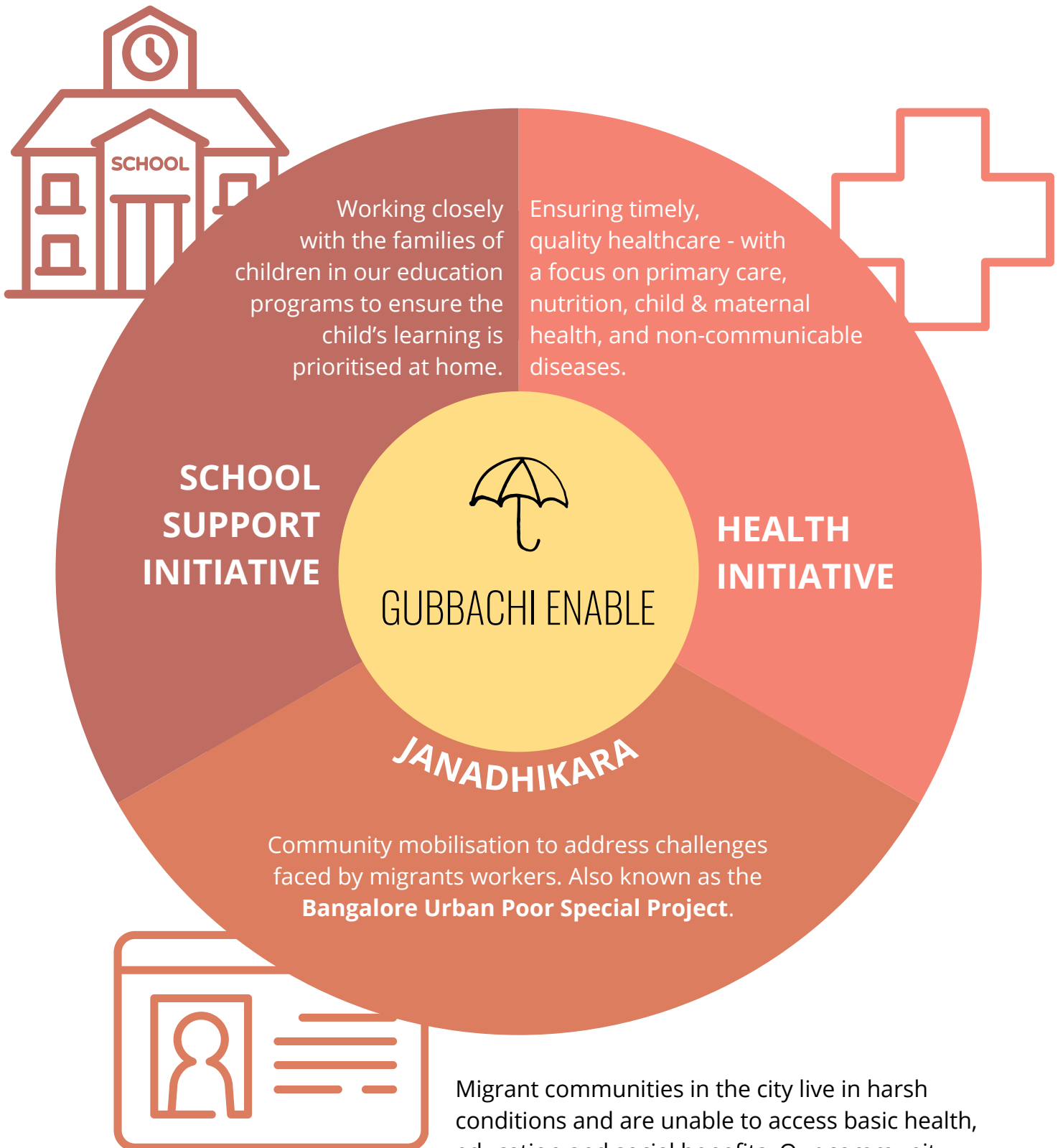
Mina's family hails from Karnataka's Yadgir district. Her father is a construction worker and mother works as domestic help. The family migrated to Bengaluru 20 years ago in search of livelihoods after years of drought in their village made it difficult to earn a living.

In 2016, Mina's elder brother joined our Bridge Program at GHPS Kodathi, and 4-year-old Mina was enrolled into Buds to start her learning journey. She was in Grade 2 when the pandemic struck in 2020. Throughout this time, our teachers worked hard to ensure there was no break in our children's education. When government schools reopened at the end of 2021, Mina was learning at her grade level thanks to these efforts.

In Grade 4, Mina and some of her peers started evening classes to prepare them for The Samhita Academy's Ankur Scholarship entrance exam. Ankur selects children from underserved communities in Karnataka to join their hostel at Grade 5, training them in English to mainstream them into Samhita Academy's CBSE classrooms. Mina was selected in June 2023 and is continuing to work hard. We are fortunate to have found another organisation who also believes in the potential of education to break the cycle of poverty.



# COMMUNITY PROGRAMS



Migrant communities in the city live in harsh conditions and are unable to access basic health, education and social benefits. Our community work addresses different facets of these issues through multiple initiatives.

# ENABLE

## NUMBERS AT A GLANCE

### School Support Initiative

- **1,035** families engaged
- **8** communities engaged
- **4** Community Associates

### Health Initiative

- **3,816** households impacted in Kariyammana Agrahara
- **17** communities engaged
- **13** Community Health Associates
- **1** Coordinator

### Janadhikara

- **7,418** households impacted
- **22** communities engaged
- **10** Community Associates
- **1** Coordinator

## PROGRAM HIGHLIGHTS, 2023-24

### School Support Initiative

- Enrolled 137 out-of-school children from migrant communities into government schools and our bridge program.
- Conducted regular Parent Teacher Meetings across locations, as well as regular home visits to follow up on long absentees.
- Facilitated School Development and Monitoring Committee (SDMC) meetings across schools.

### Health Initiative

- Home births came down to zero thanks to our efforts to facilitate linkages with hospitals.
- Our Primary Health Centre saw around 6,000 unique patients seeking primary treatment. 846 patients were referred to government hospitals for secondary treatment.
- 855 children under five were immunised in the Kariyammana Agrahara community.

### Janadhikara

- In collaboration with the Department of Education, we conducted a door-to-door survey in eight migrant worker settlements around Sarjapur Road, identifying 314 out-of-school children.\*
- 1,048 new and correction of existing Aadhaar Cards\*
- 210 new bank accounts\*
- 448 new Labour Cards and E-Shram Cards\*
- 227 new PAN Cards\*



# ENABLE

- 503 new ABHA Cards\*
- 93 new Voter IDs
- After-school activities in seven communities, engaging over 200 children - ranging from art, games, academics and awareness meetings on relevant topics such as safety and hygiene.

\* Together with School Support Initiative.

## PROGRAM FUNDERS

### School Support Initiative

- iQuanti India
- Lam Research India
- LTIMindtree Foundation
- ThoughtFocus Information Technologies
- United Way of Bengaluru
- Wipro Cares

### Health Initiative & Janadhikara

- Azim Premji Philanthropic Initiatives

## INTERVENTIONS WITH PARTNER ORGANISATIONS

### Connecting Smiles Foundation

Connecting Smiles Foundation runs the tailoring unit supported by Singer. 67 women from the Kariyammana Agrahara community have undergone the 3-month training program. This has empowered some of them to become self-employed and provide an additional source of income for their families.

### Vathsalya Charitable Trust

Our collaborative nutrition program has been expanded from a single community to two communities now. 166 children between the ages of 2-8 years are provided ragi malt and boiled eggs everyday. Their health indicators are monitored on a monthly basis and supplements are given to those found deficient.

# TRIUMPH OVER ADVERSITY



## **Baby Sana, Kariyammana Agrahara** **Facilitating access to healthcare for disadvantaged out-of-state migrants**

Mohammed and Reshma are migrants from Assam working as waste pickers in the Kariyammana Agrahara settlement.

In July 2023, Reshma gave birth to a baby girl. Less than a month later, the baby developed high fever and convulsions. Our Health Clinic in the community was the first point of help for the family.

Our Health and BUPSP teams rushed to action. Anxious hours of enquiring at hospitals, working out options, and arranging ambulance services led to the baby being successfully treated at the NICU in Indira Gandhi Hospital at a reduced cost.

Despite being BPL (Below Poverty Line) card holders, the family was unable to get the benefit of free treatment at the government hospital because they are out-of-state migrants, and their documents from Assam are not valid in Karnataka.

Program interventions like ours help in making last mile connections for displaced families who have no safety nets in the city.





## **Ramesha, 21**

### **Youth empowerment through upskilling and guidance**

Ramesha's parents - contract sweepers with BBMP (Bruhat Bengaluru Mahanagara Palike) - moved to Bengaluru 18 years ago. Their son had to stay back with his grandparents in their village in Andhra Pradesh.

The pandemic took a toll on the family and in 2022 Ramesha was forced to drop out of college and join his parents in the city to earn a living as a construction worker. The turning point that year was when Ramesha attended a community meeting conducted by the Coordinator and Community Associates of our Janadhikara team.

The meeting opened up doors for Ramesha to an upskilling program with Reaching Hand - an NGO that skills youth in basic computer skills and English communication. This got him a cashier's job at D-Mart.

Ramesha still aspired to finish a degree and secure his future.

With the guidance of our Janadhikara team, he enrolled into a three-year degree course in General Operation Theatre (G-OT) Nursing at the SLES College of Nursing in Chintamani, Kolar district.

Information and bridging connections to the right resources empowered Ramesha. He now has a visible pathway to a skilled job that gives him social mobility



# HIGHLIGHTS OF THE YEAR





# CAMPAIGNS & FUNDRAISERS



In October we took part in **Give's 100 Heroes** campaign for **DaanUtsav**, and raised funds for the education of migrant children.

**give**

**Gift better schooling to those deprived**

Campaign by Gubbachi Learning Community

₹3,36,641	31	0
Raised of ₹20L goal	Donations	Days Left

[Give Now](#)

*I'm running!*



*Gubbachi works tirelessly to provide children with quality education, access to resources, and a supportive environment. By supporting Gubbachi, we're not just providing education; we're nurturing dreams, unlocking potential, and giving these children the opportunity to build a better tomorrow.*

**Akhilesh Kamath** (Bangalore)  
Founder Director of Actualize, Avid runner, Fitness enthusiast

**Help Akhilesh provide quality education for 140 children:**



[tcs10k.aidbees.org/view-fundraiser-444](https://tcs10k.aidbees.org/view-fundraiser-444)

Although the **TCS World 10k** run was held on 28 April 2024, our supporters raised **INR 7,20,577** in FY 2023-24 through their fundraising efforts.



# CORPORATE VOLUNTEERING



(Above) Employees from **LTIMindtree Foundation** volunteered at GHPS Kodathi, cleaning and painting our new classrooms. They also took part in Dussehra, Children's Day and Sankranthi activities. In February, some of our senior students were taken on a campus visit to LTIMindtree at Whitefield.

(Right) **Lam Research** distributed new uniforms at GHPS Mullur, Kodathi, A Krishnappa Nagar and GLPS Sulikunte Dinne.



(Left) **iQuanti India** volunteered with GHPS Harlur, taking them to the planetarium, and organising activities and gifts for Children's Day.





# CORPORATE VOLUNTEERING



Children from the Kariyammana Agrahara Community Learning Centre visit **Epicor**, Whitefield.



Employees from **Thoughtfocus** volunteered to guide children from GHPS Kaikondrahalli on their field trip to Nehru Planetarium.



**Brainlabdigital India** employees conducted a clay model-making workshop for the *Nali-Kali* children at GHPS A Krishnappa Nagar.



# IN THE MEDIA



## What Happens to Migrant Workers' Kids? 6 Friends Help 4000 Join Mainstream Schools

"Driven by a common purpose, Nomita along with Bengaluru-based Rizwan Ahmed, Manimakalai Raja, Preethy Rao Patel, Joseph Deyone Jacobi, and Somya Nand came together to mainstream such children into the government schools and public space."

**The Better India** | 2 August, 2023



"We understand dignity as the ability of an individual to be an equal part of society, and, therefore, have a voice (to) articulate needs and aspirations without fear. The dignity of a child is the fulcrum on which all decisions pertaining to our work in education rests."

**Rizwan Ahmed for Samuhik Pahal (Wipro Foundation)** | January, 2024



## Episode 2: Out-of-school children: What prevents them from accessing schools?

In conversation with Gubbachi Co-Founders Somya Nand and Rizwan Ahmed.

**Educators' Commune podcast** | 17 February, 2024



## Old Teflon pans come alive as home decor

"The process of recycling an object and transforming it into something beautiful "can be both rewarding and empowering." (...) Regular workshops are also held at NGOs like Hosabelaku Trust and Gubbachi Learning Community. The net proceeds are given back to the NGOs."

**Deccan Herald** | 30 March, 2024



# FINANCIALS & STAKEHOLDERS

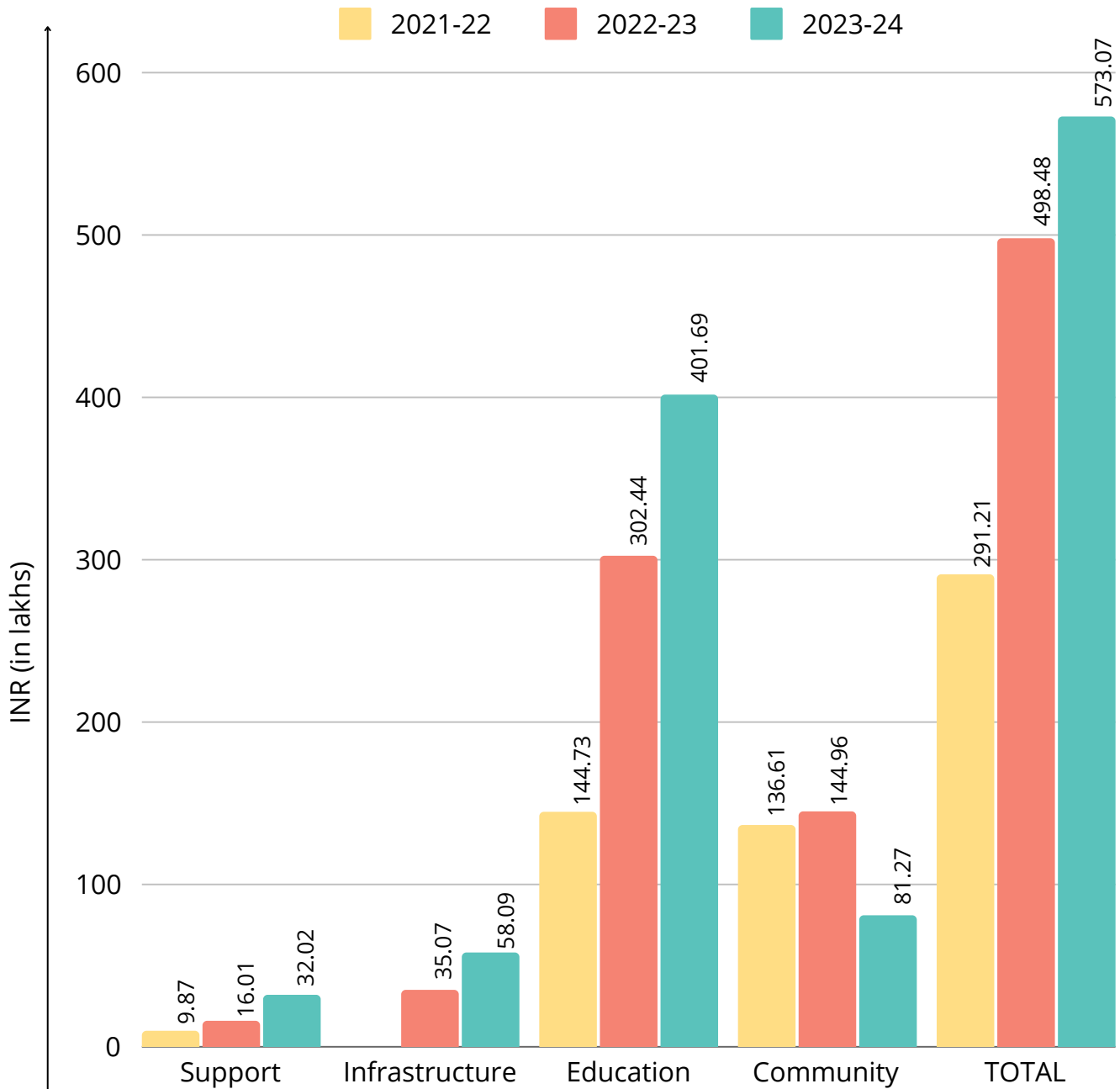


# FUNDING & DONATIONS

PROGRAM DONATIONS	AMOUNT (INR)	% OF CONTRIBUTIONS	
Azim Premji Philanthropic Initiatives	85,51,000	14.07%	76%
Azuga Telematics	15,00,000	2.47%	
Brainlabsdigital India	3,06,219	0.50%	
Epicor Software India	8,53,796	1.41%	
Gaininsights Solutions	5,01,280	0.82%	
iQuanti India	20,41,734	3.36%	
Lam Research India	27,25,150	4.48%	
LTIMindtree Foundation	1,44,50,000	23.78%	
Moder Solution India	5,83,982	0.96%	
PriceWaterhouseCoopers SDC (Kolkata)	45,36,801	7.47%	
Quicken software Development	7,76,128	1.28%	
Rossari Biotech	5,50,000	0.91%	
Rotary Bangalore Koramangala	55,470	0.09%	
ThoughtFocus Information Technologies	21,94,384	3.61%	
United Way of Bengaluru	23,16,376	3.81%	
UST Global Welfare Foundation	10,00,000	1.65%	
Wipro Cares	31,88,000	5.25%	
Child Welfare Charitable Trust	2,20,558	0.36%	
<b>GRANTS</b>			17%
Mountain Managers	18,20,955	3.00%	
Farm India Impex	5,00,000	0.82%	
General Datatech India	5,00,000	0.82%	
Intel Technology India	42,63,919	7.02%	
LG Soft India	22,00,000	3.62%	
Marlabs Innovations	5,00,000	0.82%	
Rare Family Foundation	2,00,000	0.33%	
Vastra Concepts	40,000	0.07%	
XL India Business Services	3,73,700	0.61%	
<b>DONATIONS FROM INDIVIDUALS</b>	40,15,864	6.61%	7%
<b>TOTAL</b>	<b>6,07,65,316</b>		



# ALLOCATION OF FUNDS



# BALANCE SHEET

<b>GUBBACHI LEARNING COMMUNITY</b>			
<b>CIN: U85110KA2015NPL082708</b>			
<b>Balance Sheet as at 31st March, 2024</b>		<b>Amount in INR</b>	
		(Unaudited)	(Audited)
<b>Particulars</b>		<b>As at 31.03.2024</b>	<b>As at 31.03.2023</b>
<b>I</b>	<b>EQUITY AND LIABILITIES</b>		
<b>1)</b>	<b>Shareholder's Fund</b>		
	a) Share Capital	1,00,000	1,00,000
	b) Reserves and Surplus	1,69,18,422	1,24,21,789
		<b>1,70,18,422</b>	<b>1,25,21,789</b>
<b>2)</b>	<b>Current Liabilities</b>		
	a) Trade payables	-	-
	b) Other current liabilities	7,85,174	8,67,494
	c) Short-term provisions	15,45,795	10,33,770
		<b>23,30,969</b>	<b>19,01,264</b>
	<b>TOTAL</b>	<b>1,93,49,391</b>	<b>1,44,23,053</b>
<b>II</b>	<b>ASSETS</b>		
<b>1)</b>	<b>Non Current Assets</b>		
	a) Property, Plant & Equipment		
	(i) Tangible assets	9,18,717	4,48,783
		<b>9,18,717</b>	<b>4,48,783</b>
<b>2)</b>	<b>Current Assets</b>		
	a) Current investments	1,18,11,554	1,17,40,674
	b) Cash and cash equivalents	58,82,209	16,74,333
	c) Other Current Assets	7,36,911	5,59,264
		<b>1,84,30,674</b>	<b>1,39,74,270</b>
	<b>TOTAL</b>	<b>1,93,49,391</b>	<b>1,44,23,053</b>

## COLLABORATOR SPEAK

**DR NEHA VAKHARIA**

**Founder Trustee, Oasis Movement**



"In today's fast paced society, the focus on holistic development of our youngsters is often overshadowed by the pressure of academic achievements. However, we are very happy to witness your deep conviction in Character Building Education for shaping young hearts. We are proud to have Gubbachi as our consistent partner in all Oasis Programs."



# INCOME & EXPENDITURE

<b>GUBBACHI LEARNING COMMUNITY</b>		Amount in INR	
<b>CIN: U85110KA2015NPL082708</b>		(Unaudited)	
<b>Statement of Income and Expenditure for the year ended 31st March, 2024</b>		(Audited)	
<b>Particulars</b>		For the year ending 31.03.2024	For the year ending 31.03.2023
	<b>Revenue :</b>		
I.	Voluntary Contribution & Donations	6,07,80,415	5,01,33,555
II.	Other Income	5,14,274	4,60,323
III.	<b>Total Revenue (I+II)</b>	<b>6,12,94,689</b>	<b>5,05,93,878</b>
	<b>Expenses :</b>		
IV.	Learning Initiative Expenses	4,02,40,261	2,95,16,051
V.	Community Services	82,63,290	1,53,71,633
VI.	Donation Paid	14,60,026	2,80,000
VII.	Administration Expenses	65,04,608	44,89,402
VIII.	Depreciation and Amortization Expense	3,29,872	1,91,180
IX.	<b>Total Expenses ( IV to VIII )</b>	<b>5,67,98,057</b>	<b>4,98,48,266</b>
X.	<b>Surplus / (Deficit) for the period</b>	44,96,632	7,45,612

## COLLABORATOR SPEAK

### UMA HRISHIKESH

**Special Educator, Maja Maadi**



"The team at Gubbachi live true to their name! They embody the spirit of adaptability, weaving through challenges to empower young minds. Like the sparrow's communal nature, they foster collaboration among students, teachers, and communities - creating a vibrant network of learning. Their efforts resonate with the sparrow's resilience, navigating obstacles to ensure access to quality education for all! Catch them compromise on anything at all and I'll accept any challenge you throw at me! With a chirpy and energetic approach, the teachers infuse hope and vitality into classrooms, enriching the educational experiences for the children. Just as sparrows symbolise inclusivity and resourcefulness, Gubbachi truly embraces diverse learners and has a thirst for innovative solutions - leaving a lasting impact on the lives they touch!"

# OUR STAKEHOLDERS

## LOCAL GOVERNANCE & CIVIC BODIES

- Anganwadi Centres: Yamare, Kodathi, Kaikondrahalli, Rayasandra, Doddakannelli, Bhoganahalli, Bellandur, Kariyammana Agrahara and Dommasandra
- Bangalore One, Gunjur
- Block Education Office, South 4, KR Puram
- Bruhat Bengaluru Mahanagara Palike (BBMP), Mahadevapura
- Child Welfare Committee, MS Building
- Department for the Empowerment of Differently Abled and Senior Citizens
- Gram Panchayats: Kodathi, Yamare, Dommasandra, Chikkanayakanahalli
- Labour Department, Government of Karnataka
- Post Office, Carmelaram
- Police station, Bellandur
- UIDAI, Regional Office

## HEALTH PARTNERS

- District Health office (DHO), Mahadevapura
- Government Secondary and Tertiary hospitals Bengaluru
- Primary Health Centres (PHCs): Kodathi, Doddakannelli, Dommasandra (Maternity)
- Taluk Health Office (THO)

## COLLABORATING PARTNERS

Connecting Smiles Foundation • Vathsalya Charitable Trust

## SERVICE PROVIDING PARTNERS

Eye Foundation Bellandur • Kotak Mahindra Bank, Kaikondrahalli Branch • Platform Commons • Seva Sindhu, Gunjur

## PARTNER GOVERNMENT SCHOOLS & SDMCs

GHPS A. Krishnappa Nagara • GHPS Chennagiri • GHPS Doddakannelli • GHPS Haralur • GHPS Kaikondrahalli • GHPS Kodathi • GHPS Mulluru • GHPS Panathur • GLPS Sulikunte Dinne



# OUR STAKEHOLDERS

## ACADEMIC & CAPACITY BUILDING PARTNERS

Alternate Law Forum • Ananta Sports Academy • Asan India • Azim Premji Foundation • Azim Premji University • Bookworm Trust • Indian Music Experience • Jasmines Playdiem • Lifeline Seva Kendra • Maja Maadi • My\_Therapy • Oasis Movement • OutLAWed India • Proud Indian NGO • Samait Shala Education Foundation • Shikshamitra • Slum Jagattu • Spiders and the Sea • Ummeed Child Development Center • Viridus Foundation

## OTHER ACADEMIC & COMMUNITY ENGAGEMENT CONSULTANTS

Angela Jain • Geeta Prabhu • Murali D • Murtaza Khetty • Pallavi Naik • Simrita Takhtar • Thejaswi Shivanand • Vasundhara Wadiyar

## FUNDRAISING PARTNERS

Aidbees • DanaMojo • GiveIndia

## INSTITUTIONAL DONORS

Azim Premji Philanthropic Initiatives • Child Welfare Charitable Trust • LTIMindtree Foundation • Rare Family Foundation • Rotary Bangalore Koramangala Charitable Trust • United Way of Bengaluru • UST Global Welfare Foundation • Wipro Cares

## CORPORATE DONORS

Azuga Telematics Pvt Ltd • Brainlabsdigital India Pvt Ltd • Epicor Software India Pvt Ltd • Farm India Impex Pvt Ltd • Gain Insights Solutions Pvt Ltd • General Datatech India Pvt Ltd • Intel Technology India Pvt Ltd • iQuanti India Pvt Ltd • Lam Research India Pvt Ltd • LG Soft India Pvt Ltd • Marlabs Innovations Pvt Ltd • Moder Solutions India Pvt Ltd • Mountain Managers Pvt Ltd • PriceWaterhouseCoopers SDC (Kolkata) Pvt Ltd • Quicken Software Development Pvt Ltd • Rossari Biotech Ltd • ThoughtFocus Information Technologies Pvt Ltd • Vastra Concepts • XL India Business Services Pvt Ltd

“Inflation is taking up the poverty line,  
and poverty is not just economic  
but defined by way of  
health and education.”

**Azim Premji**

Join us,  
support us,  
inspire us!



## GUBBACHI LEARNING COMMUNITY

**Registered office:**

#33, 1st Cross  
Arekere  
Lakshmi Layout  
Bengaluru 560076

**Field office:**

#16, 1st floor,  
BRS Residential Layout  
Kodathi Village  
Carmelaram Post  
Bengaluru 560035

To volunteer, subscribe to our  
newsletter, or make a donation, visit:

[www.gubbachi.org.in](http://www.gubbachi.org.in)

**Follow us:**

@ gubbachi.org.in

f gubbachilearningcommunity

in gubbachi

